

Challenges in East German States

European Policy

Alignment of life conditions between

- countries
- urban and rural regions

by developing and strengthening rural areas

Development of Rural Areas

means

- improvement of agrarian structure
- support also for non-agrarian sector
- encouragement for a sustainable environmental development

to get

- better conditions of agrarian production
 - sufficient supply for jobs also in non-agrarian sector
 - more attractiveness of life circumstances and to prevent migration
-

26th February 2002

Dr. Andreas Drees

3

Germany



26th February 2002

Dr. Andreas Drees

4

East German States

Additional problems:

- state-owned farming only
- large area farming without consideration of property
- private property highly fragmented
- unattractive villages
- splitted property for land and buildings

26th February 2002

Dr. Andreas Drees

5

Large Area Farming

Western Germany



Eastern Germany

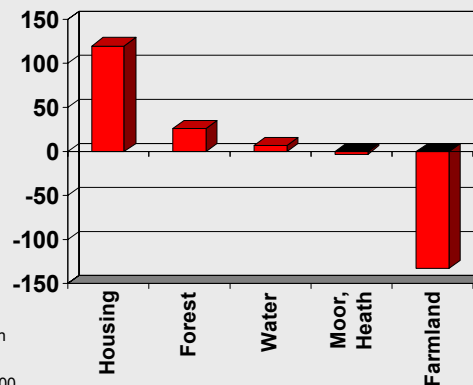
26th February 2002

Dr. Andreas Drees

6

Land Use Conflicts

Daily change of land use in GDR 1993 - 1997 in ha



Bundesamt für Bauwesen
und Raumordnung 1998
From: Grabski-Kieron 2000

26th February 2002

Dr. Andreas Drees

7

Solution: Land Consolidation

- privatisation of state-owned farms
- encouragement for new private farmers
- re-allocation of property, land exchange
- village renewal and development
- solving land use conflicts
- support for e.g.
 - environmental projects
 - infrastructural projects
 - housing, trading, tourism etc.

26th February 2002

Dr. Andreas Drees

8

Demands

as much as possible

as soon as possible

as cheap as possible

Need of Land Consolidation

Example

Department for Land Consolidation Neuruppin in Brandenburg:

district area (total)	643.000 ha
agriculturally productive land (APL) 60 %	398.000 ha
need of land consolidation 80 % of APL	320.000 ha

... already in process

Example

Department for Land Consolidation Neuruppin in Brandenburg:

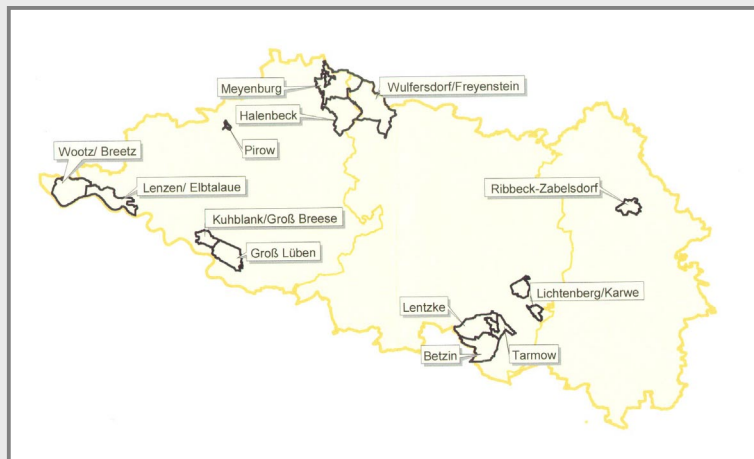
district Area (total)	643.000 ha
agriculturally productive land (APL) 60 %	398.000 ha
need of land consolidation 80 % of APL	320.000 ha
10 measurements	24.000 ha
3 measurements in preparation	10.000 ha
total	34.000 ha

26th February 2002

Dr. Andreas Drees

11

Measurements in Neuruppin

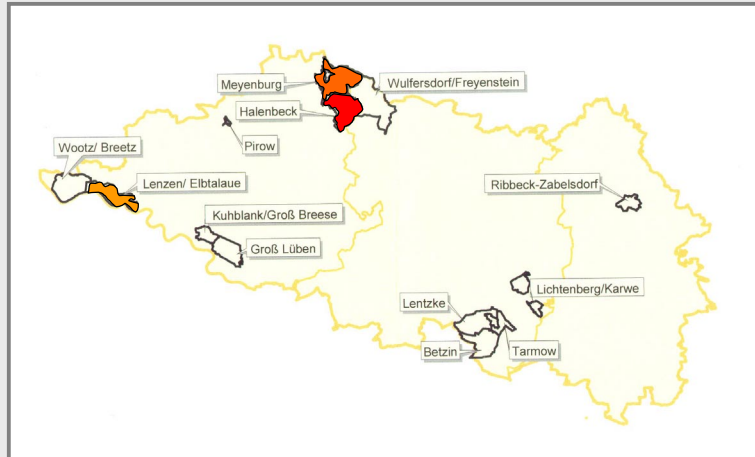


26th February 2002

Dr. Andreas Drees

12

Assistance by Authorized Helpers

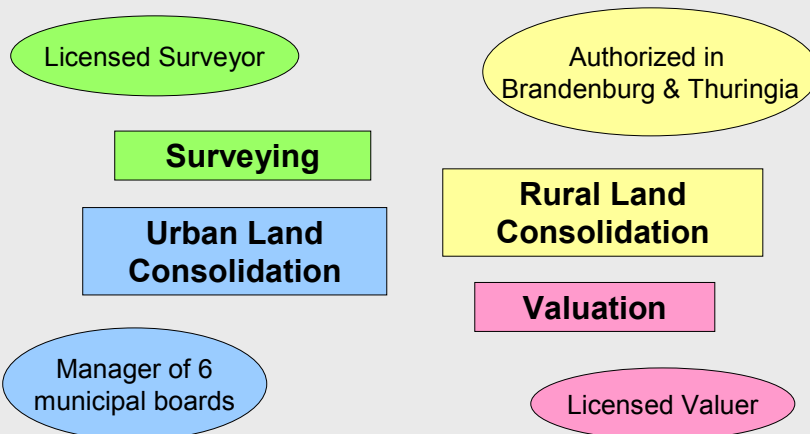


26th February 2002

Dr. Andreas Drees

13

Personal Profile



26th February 2002

Dr. Andreas Drees

14

Land Re-Allocation



26th February 2002

Dr. Andreas Drees

17

Village Renewal

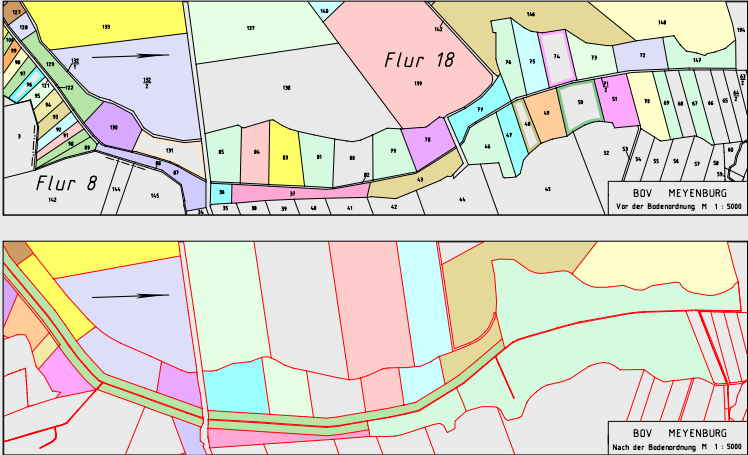


26th February 2002

Dr. Andreas Drees

18

Ecological Measurements



26th February 2002

Dr. Andreas Drees

19

Environmental Measurements



26th February 2002

Dr. Andreas Drees

20

Measurements

Meyenburg

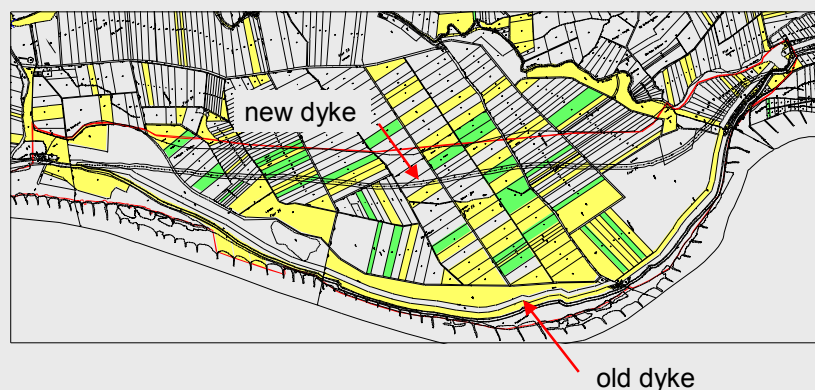
Start	1993
Size	4875 ha
Participants	850
End	2001
Costs for surveying	500 € / ha
in % of land value	20 %

26th February 2002

Dr. Andreas Drees

21

Lenzen



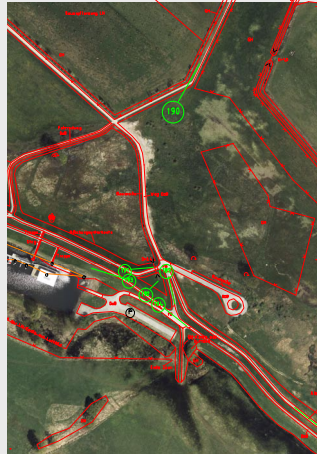
Shifting of the Elbe dyke

26th February 2002

Dr. Andreas Drees

22

Use of Photogrammetry



26th February 2002

Dr. Andreas Drees

23

Measurements

	Meyenburg	Lenzen
Start	1993	2000
Size	4900 ha	3600 ha
Participants	850	520
End	2001	2006
Costs (% of land value)		
- surveying	20 %	10 %

26th February 2002

Dr. Andreas Drees

24

Measurements

	Meyenburg	Lenzen
Start	1993	2000
Size	4900 ha	3600 ha
Participants	850	520
End	2001	2006
Costs (% of land value)		
- surveying	20 %	10 %
- land management	13 %	13 %

26th February 2002

Dr. Andreas Drees

25

Conclusions

as much as possible

strong administration
assisted by
authorized helpers

as soon as possible

tighten the course of
measurements

26th February 2002

Dr. Andreas Drees

26

Course of measurements

traditional

Step 1 Step 2 Step 3

demande

Step 1
Step 2
Step 3

26th February 2002

Dr. Andreas Drees

27

Conclusions

as much as possible

strong administration
assisted by
authorized helpers

as soon as possible

tighten the course of
measurements

as cheap as possible

lower standards

26th February 2002

Dr. Andreas Drees

28

Final Remarks

- ◆ Land development is in former socialistic countries of high political importance and under pressure of time.
- ◆ Just transfer of previous strategies is not enough.
- ◆ Land developer with high creativity are needed.